

# Summer Conferencing Services at the School of Mines



Need  
lodging for  
your team  
while in  
Rapid City?

Stay with us at the SD School of Mines!

- ❑ All rooms air-conditioned
- ❑ Newly remodeled dorms
- ❑ Great rates – Rent 5 rooms get Coaches room ½ off
- ❑ Rooms with private bathrooms
- ❑ Access to wellness center during scheduled hours
- ❑ Each guest gets his or her own bed
- ❑ Access to student rec room – pool tables, ping pong, foosball and more
- ❑ On campus meals available
- ❑ Linens provided
- ❑ Plenty of parking for buses



Reserve your rooms today!  
Summer Conferencing  
Phone: (605) 394-6774  
(Monday – Friday 7:30am– 4:00pm)  
Or email  
[summerconferencing@sdsmt.edu](mailto:summerconferencing@sdsmt.edu)

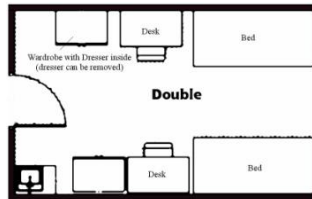
[www.sdsmt.edu](http://www.sdsmt.edu)

# The South Dakota School of Mines and Technology is the perfect place for YOU (your team and fans)!

For More Information,  
Contact:  
**Summer Conferencing**  
Phone:(605)394-6774  
Monday – Friday  
7:30am – 4:00pm  
summerconferencing@sdsmt.edu

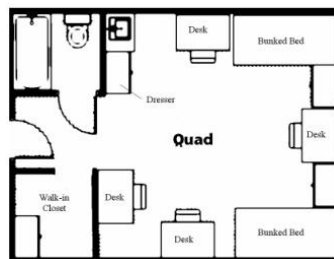
## Silver Package – Connolly or Palmerton Halls

Bathrooms down the hall  
(max of 2 people per room)  
\$30.00



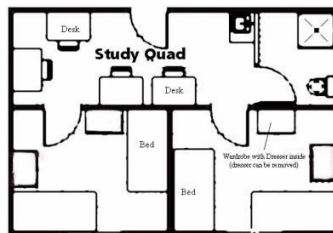
## Gold Package – Peterson Hall

In room bath, bunked beds  
(max of 4 people per room)  
\$72.00



## Platinum Package – Peterson Hall

In-room bath, private bedrooms  
(max of 4 people per room)  
\$82.00



## New in 2017 - Placer Hall

Suites with 2 or 4 separate bedrooms, private bathroom, and shared living room.  
(max of 4 people per room)  
\$82.00



Prices listed are per room, per day and include linen. Prices are applicable to group billing (not individual); maximum occupancy for each style room is listed in parentheses. Prices do not include applicable SD state sales tax.

### Just a few reminders...

- Alcohol and drugs are prohibited on campus. This includes possession and consumption.
- Persons less than 18 years of age must be supervised by an adult (over 21) while staying on campus.
- All residence hall entrances are locked 24 hours a day for added safety and security. You will be issued a key card for access to the buildings and individual rooms